



IMPORTANT SAFETY INSTRUCTIONS

- Read all instructions carefully before use
1. Make sure that your outlet voltage is correspondent to the coffee machine "220-240V"
 2. Place the 2-in-1 blender on a flat surface or on a table.
 3. NEVER put appliance and cable in water or any other liquid to avoid electric shock.
 4. DO NOT USE the 2-in-1 blender if the cord or any other part is damaged in order to reduce the risk of electric shock. If you encounter any faults, please contact nearest KB ELEMENTS point of sales.
 5. Do not put weights on the cord, and keep it away from hanging over edges or touching hot surfaces to avoid damage.
 6. Do not place the 2-in-1 blender on or near objects that produce high temperatures such as ovens, heaters, refrigerators, or stovetops.
 7. Do not use attachments not recommended by KB ELEMENTS.
 8. Always unplug the 2-in-1 blender when not in use or before cleaning, and always store it in a dry place.
 9. Keep hands and utensils away from blades during operation.
 10. Ensure the blender/grinder jar is properly locked before starting.
 11. This appliance is intended for household use only. Commercial use is not permitted And it is NOT intended for outdoor use.
 12. Keep the appliance out of reach of children.
 13. Do not operate the appliance continuously for more than 1 minute. Allow it to cool between uses.

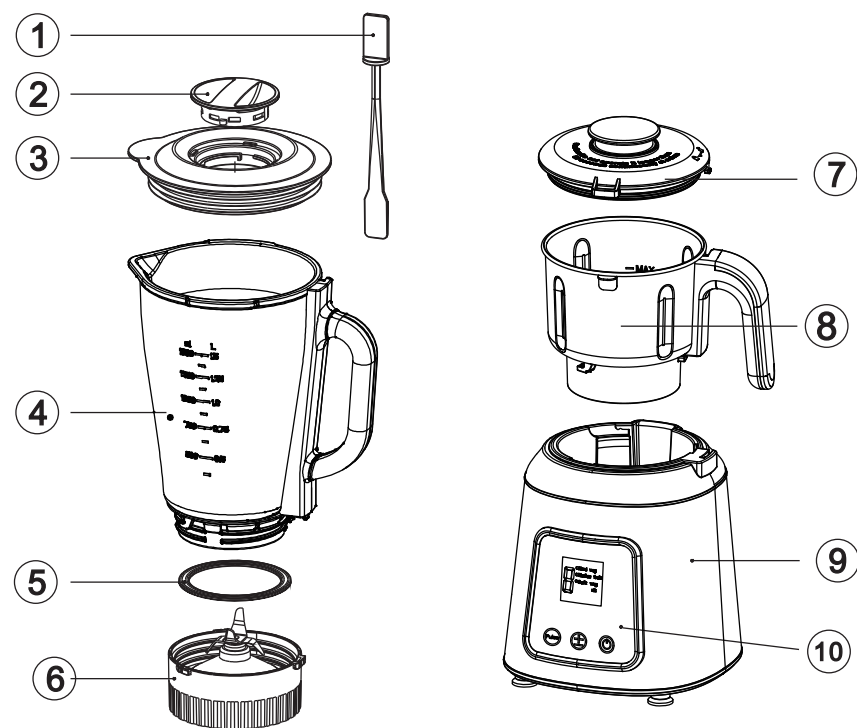
TECHNICAL SPECIFICATIONS

Power Supply: AC 220-240V ~ 50/60Hz
Power: 600W
Blender Capacity: 1.5 Liters
Grinder Capacity: 300ml
Speeds: 5 Speeds + Pulse Function

PRODUCT FEATURES

600W High-Performance Motor for fast blending and grinding.
2-in-1 Functionality: Blend drinks, smoothies, and soups; grind coffee beans, spices, and nuts.
Durable Stainless Steel Blades for efficient cutting and grinding.
Compact and Modern Design suitable for any kitchen.
Safety Lock System prevents accidental operation.
Easy to Clean with detachable parts.

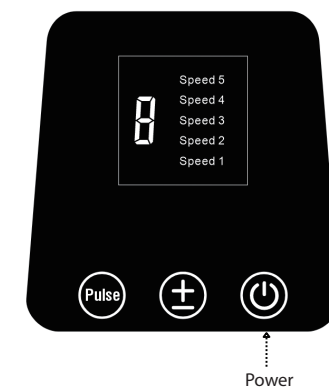
PRODUCT OVERVIEW



1. Blender Stick
2. Small Lid
3. Blender Cover
4. Blender Jar
5. Rubber ring
6. Blender Cutting Base
7. Grinder Cover
8. Stainless steel grinder jar
9. Motor Housing
10. Touch Control Panel

TOUCH CONTROL PANEL DESCRIPTION

1. On/Off and Reset (Power)
 2. Select Function (+ -)
- Speed1: 115W
Speed2: 125W
Speed3: 141W
Speed4: 160W
Speed5: 197W
3. Pulse

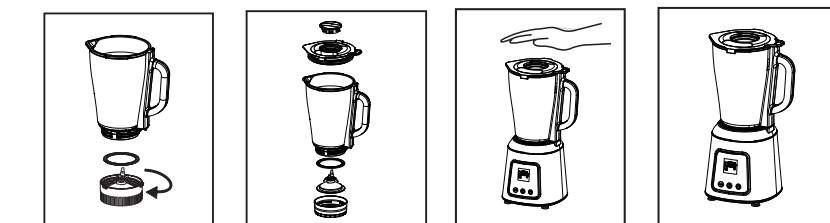


HOW TO USE TOUCH CONTROL PANEL

1. Plug in, display middle speed level 3
2. Press (+ -) to select the desired speed according to different ingredients.
3. After selecting the desired speed, press (Power) to start operation. Then Press (Power) again to switch off and stop operation.
4. For precision operation, press (Pulse) continuously. It stops when release the pressing finger.

HOW TO ASSEMBLE AND USE THE BLENDER

- Attach the Rubber Ring: Place the rubber sealing ring securely onto the cutting base.
- Secure the Blender Jar: Screw the blender jar firmly onto the cutting base to ensure a tight fit.
- Add Ingredients: Place your ingredients into the jar. For optimal performance, add a suitable amount of liquid (approximately 1/3). Close the jar with the lid and ensure the small inner lid is properly locked in place.
- Install the Jar onto the Motor Base: Align the blender jar with the motor base following the "Lock–Unlock" markings. Insert the jar and twist it clockwise to lock securely before plugging in the appliance.

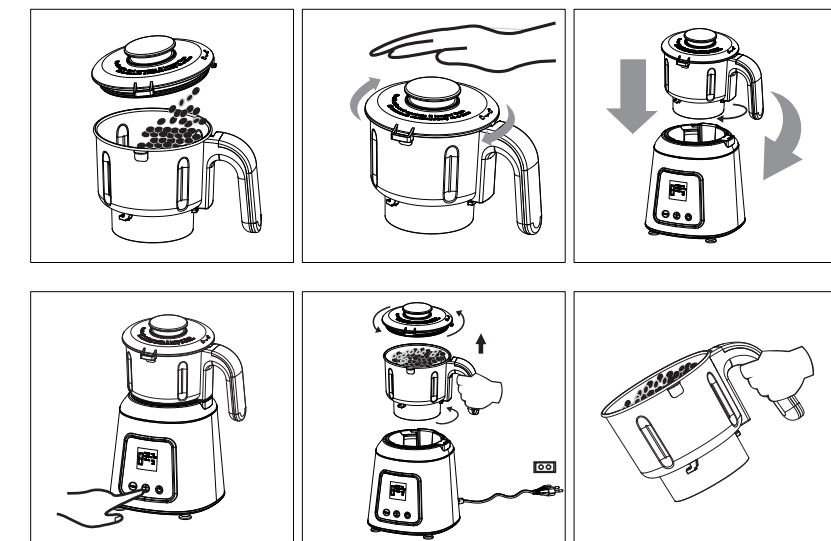


! CAUTION !

Ensure the appliance is switched off before assembly or operation.
Do not operate the appliance without ingredients in the jar (unloaded).
Maximum Blender Capacity: 1500ml
Do Not Process the Following Foods: Raw or cooked meat, dry or frozen foods, thick or sticky foods and foods with very low moisture content (e.g., potatoes)
IMPORTANT USAGE TIPS:
For sticky or low-moisture foods, reduce the quantity to two-thirds of the maximum capacity. Always add a sufficient amount of water or liquid to assist blending.

HOW TO ASSEMBLE AND USE THE GRINDER

- Add Ingredients: Press the lock button to open the grinder cover. Place dry ingredients into the grinder jar (approximately 100–400g or 200–300ml), making sure not to exceed the MAX marking.
- Secure the Cover: Close the grinder cover and lock it firmly by pressing the lock button. Hold the handle and twist the jar onto the motor base, locking it securely by following the "Lock–Unlock" directional markings.
- Position and Start Operation: Ensure the appliance is placed on a flat, stable surface. Plug in the appliance, select the desired speed setting, and start grinding.
- Recommended Usage Guidelines: Do not operate the grinder continuously for more than 2 minutes at a time.
- * For optimal performance and to extend the appliance's lifespan, use the following cycle: Operate for 2 minutes, then pause for 2 minutes before resuming. This prevents motor overheating and ensures better grinding results

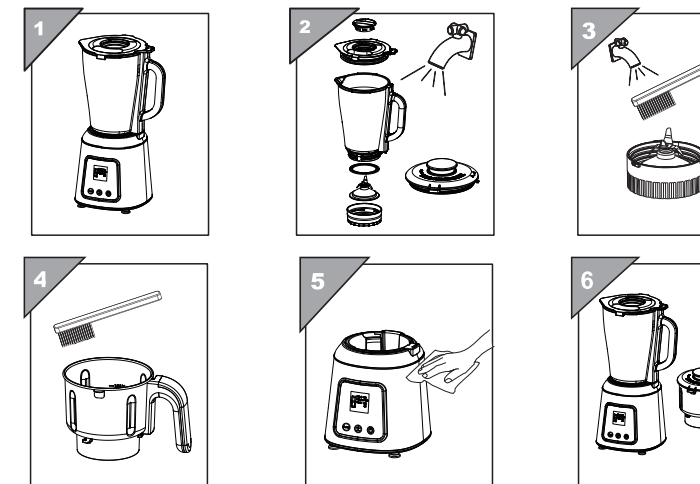


CLEANING AND MAINTENANCE

- Self-Clean the Blender Jar:**
Half-fill the blender jar with warm water, securely close the lid, plug in the appliance, press (Power) and briefly run it to rinse the interior. (See Fig. 1)
- Disassemble and Rinse:**
Remove the lid, rubber sealing ring, and cutting base. Rinse all parts thoroughly and allow them to air dry. (See Fig. 2)
- Clean the Cutting Base:**
Rinse the blender cutting base under running water and clean it gently using a soft brush. (See Fig. 3)
- Clean the Grinder Jar:**
Clean the stainless steel grinder jar using a soft brush and dry cloth. Do not rinse or immerse the grinder jar in water. (See Fig. 4)
- Wipe the Motor Housing:**
Use a soft, dry cloth to clean the motor housing. Do not immerse it in water or rinse under running water. (See Fig. 5)

! CAUTION !

Always unplug the appliance before cleaning.
Wipe the motor base with a damp cloth. Do not immerse in water.
Blades are sharp; handle with care during cleaning.
All detachable parts are hand-washable. Do not use abrasive cleaners.



Always store the cleaned appliance in a dry and flat place.

To know more about this product, please visit our youtube channel

