

WanderChef  
MULTIFUNCTION FOOD PROCESSOR  
ELK305FP  
USER MANUAL



Please read this manual carefully and retain for future references.

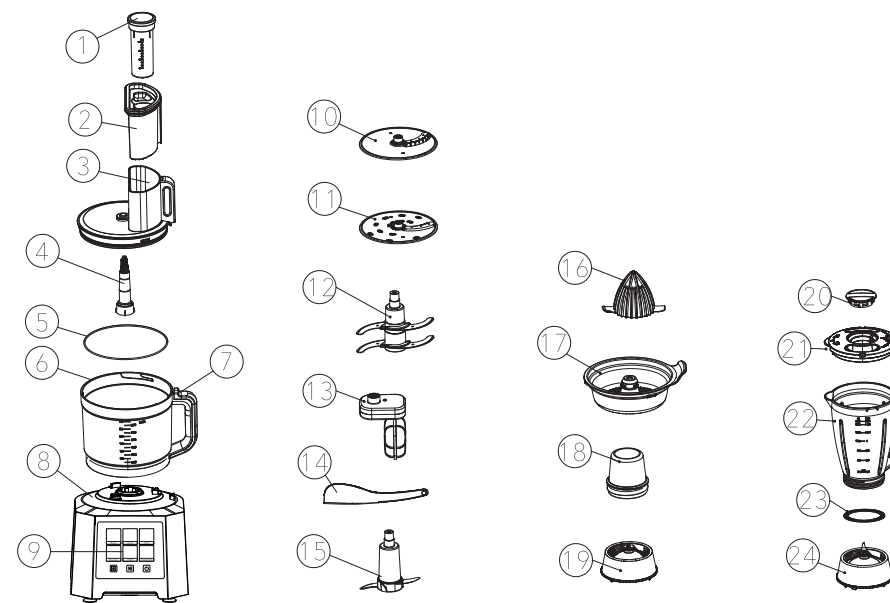
IMPORTANT SAFETY INSTRUCTIONS

- Read all instructions carefully before use
1. Make sure that your outlet voltage is correspondent to the food processor "220-240V"
  2. Place the food processor on a flat surface or on a table.
  3. NEVER put appliance and cable in water or any other liquid to avoid electric shock.
  4. DO NOT USE the food processor if the cord or any other part is damaged in order to reduce the risk of electric shock. If you encounter any faults, please contact nearest KB ELEMENTS point of sales.
  5. Do not put weights on the cord, and keep it away from hanging over edges or touching hot surfaces to avoid damage.
  6. Do not place the food processor on or near objects that produce high temperatures such as ovens, heaters, refrigerators, or stovetops.
  7. Do not use attachments not recommended by KB ELEMENTS.
  8. Always unplug the food processor when not in use or before cleaning, and always store it in a dry place.
  9. Never use your fingers or foreign objects (such as knives or spoons) to push food into the appliance. Always use the provided food pusher for safe operation.
  10. Do not open the lid or insert hands or hard objects into the jar while the appliance is in operation. Always wait until the appliance has completely stopped before accessing the jar.
  11. The cutting blades are extremely sharp. Exercise caution during assembly, disassembly, and cleaning to avoid injury.
  12. Do not run the appliance empty or overload it with ingredients. Avoid prolonged continuous operation. Always ensure the safety lock is securely fastened before switching on.
- Note: The appliance is designed not to operate unless the safety lock is properly engaged.
13. This appliance is equipped with an automatic overheating protection system. If the motor stops due to abnormal use or overloading, unplug the unit and allow it to cool for at least 15 minutes before restarting.
- If the appliance still does not operate, please contact an authorized service center for inspection.
14. This appliance is intended for household use only. Commercial use is not permitted
- And it is NOT intended for outdoor use.
15. Keep the appliance out of reach of children.
  16. Do not operate the appliance continuously for more than 2 minutes. Allow it to cool between uses.
  17. Always clean the appliance immediately after use to prevent food residue from hardening and to reduce the risk of bacterial growth.

TECHNICAL SPECIFICATIONS

Power Supply: AC 220-240V ~ 50/60Hz  
Power: 1000W  
1.5 Liter Glass Blender jar  
3 Liter Processing Bowl  
50g Glass dry Grinder

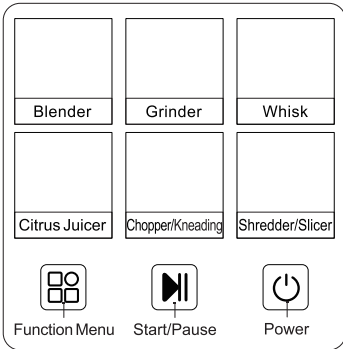
PRODUCT OVERVIEW



1. Small Pusher
2. Big Pusher
3. Bowl Cover
4. Driving Shaft
5. O-Ring Seal
6. Food Processor Bowl
7. Locking Slot
8. Main Body
9. Digital Control Panel
10. Shredder, Julienne disc
11. Coarse Slicer, Grater disc
12. Chopper Blade
13. Egg Beater with twin whisk
14. Spatula
15. Dough Blade
16. Citrus Juicer Cone
17. Citrus juice collector
18. Grinder Container
19. Grinder Cutting Base
20. Filling Cap
21. Blender Cover
22. Blender Jar
23. Blender Seal Ring
24. Blender Cutting Base

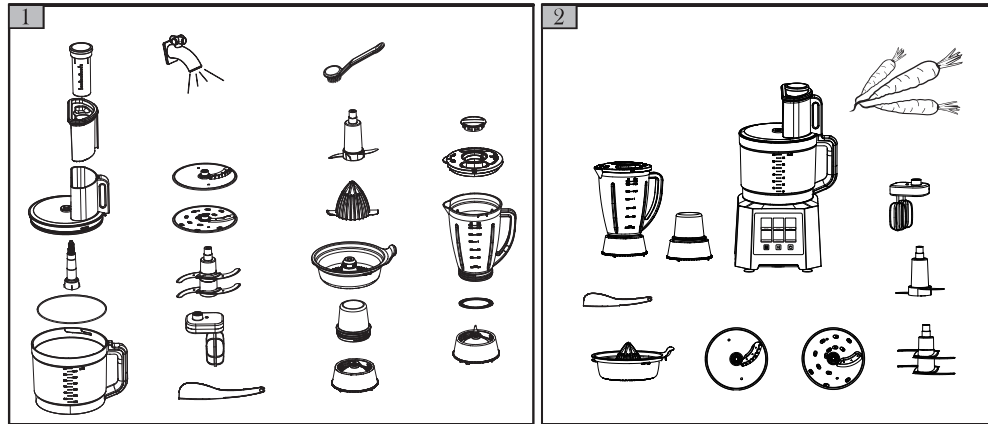
HOW TO USE TOUCH CONTROL PANEL

1. Plug in the appliance and press the Power button to activate the control panel.
2. Use the ( Function menu ) to select the desired function
3. After selecting the desired function, press the (Start / Pause) button to begin processing.
4. To stop operation, press the Power button again.

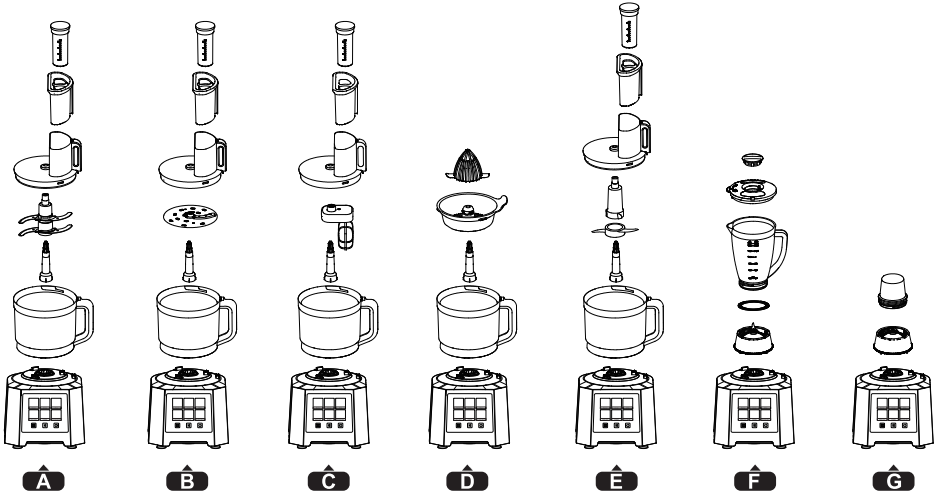


PREPARING FOR USE

1. After unpacking, carefully check that all parts and accessories are included and undamaged.
2. Wash and thoroughly dry all components that will come into contact with food (see Fig. 1). Wipe the motor housing with a soft, dry cloth. Do not immerse it in water.
3. Practice assembling and disassembling the appliance a few times to ensure proper use and safe handling.
4. Wash fruits and vegetables thoroughly. Cut them into pieces small enough to fit through the feeding tube (see Fig. 2).



FUNCTION DESCRIPTION



NO.	PICTURE	FUNCTION	FUNCTION INTRODUCTION
A		Chopping Blade	Chopping meat/ Cutting vegetables
B		Shredder, Julienne disc/ Coarse Slicer, Grater disc	Slicing/ shredding/ chipping food and vegetables such as Carrots, Cheese, Cucumber, etc
C		Whisk	Whip cream, beat egg whites and mix sponges and ready-mix
D		Citrus Juicer	Squeeze citrus, orange juice
E		Dough Blade	Dough kneading
F		Blender	Blend/Mix fruit, vegetable or liquid food
G		Grinder	Grind coffee/soy bean, dry seeds and spices

HOW TO USE THE FOOD PROCESSOR

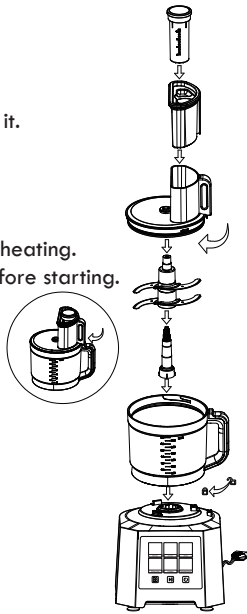
Place the processing bowl onto the motor base and turn it clockwise until it locks securely in place. Choose your desired attachment (chopper blade or emulsifying disc) and insert it vertically by aligning its center hole with the driving shaft.

For Slicing, Shredding, or French Fry Cutting:  
First, lock the bowl cover securely in place.  
Add ingredients through the feeding chute only after the processor is fully assembled and ready. Plug in the appliance.

After Processing:  
Press the Power button to turn off the appliance.  
Unplug the unit and turn the processing bowl counterclockwise to remove it.

! CAUTION !

Only one blade or disc should be used at a time.  
Do not operate continuously for more than 2 minutes to avoid motor overheating.  
Always ensure the blade and all components are securely assembled before starting.  
Use the Pulse function briefly to test whether the assembly is correct.  
If the appliance does not operate normally, unplug it immediately and reassemble carefully before retrying.



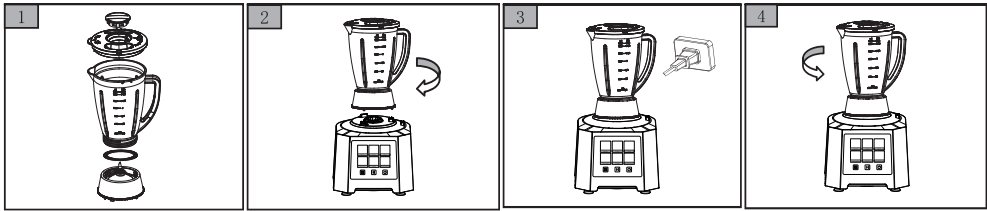
HOW TO USE THE BLENDER

Screw the blender jug tightly onto its base.  
Place pre-cut fruits or vegetables (1–2 cm in size) into the jug.  
Add drinkable water or another liquid to assist blending.  
Close the lid securely to prevent spillage during operation.  
Place the assembled jug onto the motor base and lock it into position.  
Plug in the appliance.

After Use:  
When blending is complete, press the Power button to turn off the unit.  
Unplug the appliance and unscrew the jug counterclockwise to remove.

! CAUTION !

Ensure the power is off and the lid is securely in place before starting.  
Never operate the blender empty.  
For sticky or low-moisture foods, reduce the quantity by one-third and add a small amount of liquid to improve blending performance.  
Maximum blending capacity: 1500 ml.  
Do not operate continuously for more than 2 minutes. Allow the motor to cool between uses.  
Use caution when blending hot liquids—steam pressure may force contents out of the jug.  
Always allow hot items to cool slightly before blending.



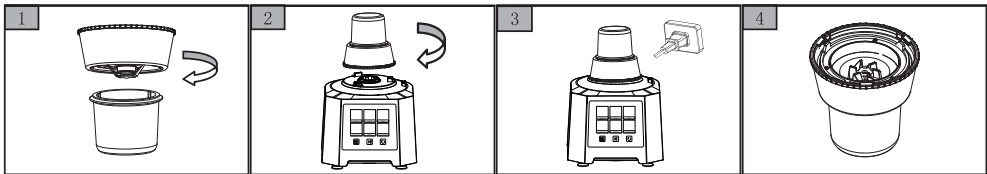
HOW TO USE THE GRINDER

Turn the Grinder container upside down, add the ingredients, and then screw the container tightly onto the blade base.  
Place the mill onto the motor unit, plug in the appliance, and select the desired Speed to begin grinding.

After Grinding:  
Unplug the appliance and remove the mill from the motor base.  
Reverse the container upright and gently tap off any ingredients stuck to the lid or sides.  
Unscrew the lid and pour out the ground contents.

! CAUTION !

Ensure the power is off before assembling or operating the mill.  
Do not operate the appliance empty.  
Maximum grinding capacity: 50g  
Do not operate the mill for more than 60 seconds continuously. Allow the motor to cool between uses.



TROUBLESHOOTING

Problem	Solution
Machine doesn't start	Ensure all accessories are properly assembled to engage the safety lock. Make sure the power plug is securely connected. Check if the power source has tripped or if there's a power outage.
Machine stops running suddenly	The processing bowl may have loosened during vigorous operation. Reinstall the bowl and ensure the lid is securely locked.

CLEANING AND MAINTENANCE

Use a soft, dry cloth to clean the motor housing.  
Do not immerse it in water or rinse under running water.  
Always unplug the appliance before cleaning.  
Wipe the motor base with a damp cloth. Do not immerse in water.  
Blades are sharp; handle with care during cleaning.  
All detachable parts are hand-washable. Do not use abrasive cleaners.

Always store the cleaned appliance in a dry and flat place.

To know more about this product, please visit our youtube channel

