

# KB ELEMENTS

## Blendiva

MULTIFUNCTION HAND BLENDER

### ELK307HB

USER MANUAL

Please read this manual carefully and retain for future references.



## IMPORTANT SAFETY INSTRUCTIONS

- Read all instructions carefully before use
1. Make sure that your outlet voltage is correspondent to the hand blender "220-240V"
  2. Place the hand blender on a flat surface or on a table.
  3. NEVER put appliance and cable in water or any other liquid to avoid electric shock.
  4. DO NOT USE the hand blender if the cord or any other part is damaged in order to reduce the risk of electric shock. If you encounter any faults, please contact nearest KB ELEMENTS point of sales.
  5. Do not put weights on the cord, and keep it away from hanging over edges or touching hot surfaces to avoid damage.
  6. Do not place the hand blender on or near objects that produce high temperatures such as ovens, heaters, refrigerators, or stovetops.
  7. Do not use attachments not recommended by KB ELEMENTS.
  8. Always unplug the hand blender when not in use or before cleaning, and always store it in a dry place.
  9. Keep hands and utensils away from blades during operation.
  10. To prevent injury, never place the cutting blade onto the base without first securing the bowl and lid in position.
  11. Ensure the chopper lid is properly locked in place before starting the appliance.
  12. This appliance is not suitable for chopping ice or blending hard, dry substances, as this may damage or dull the blades.
  13. Improper use of the appliance may result in injury. Always follow the instructions provided in this manual.
  14. This appliance is intended for household use only. Commercial use is not permitted and it is NOT intended for outdoor use.
  15. Keep the appliance out of reach of children.
  16. Do not operate the appliance continuously for more than 1 minute. Allow it to cool between uses.
  17. Always clean the appliance immediately after use to prevent food residue from hardening and to reduce the risk of bacterial growth.

## TECHNICAL SPECIFICATIONS

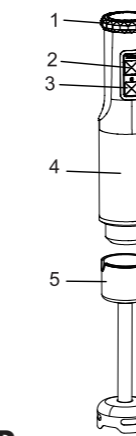
Power Supply: AC 220-240V ~ 50/60Hz  
Power: 800W  
1 Liter chopper bowl with lid  
700ml measuring blender cup  
Speeds: 8 Speeds + Turbo

## PRODUCT FEATURES

Powerful 800W DC Motor – Delivers high torque with low operating noise.  
Variable Speed Control with Turbo Function – For flexible and efficient blending.  
Digital Display with LED Indicator – Ensures precise and intuitive operation.  
Durable Stainless Steel Housing – With robust metal gear connection for long-term performance.  
Stainless Steel Blender Rod – Equipped with a 4-blade system for smooth blending.  
Titanium-Coated Blades – Enhances durability and blending efficiency.  
Titanium 4-Blade Chopper System – Provides superior chopping power.  
Dual Stainless Steel Whisks – Ideal for quick and consistent mixing results.  
1.0L Chopper Bowl with Lid – For chopping vegetables, meat, and more.  
700ml Measuring Blender Cup – Included for convenience and precision.  
Accessory Rack – Keeps all attachments organized and within reach.

## PRODUCT OVERVIEW

1. Speed control knob
2. Power Button
3. Turbo Button
4. Motor
5. Blender Rod



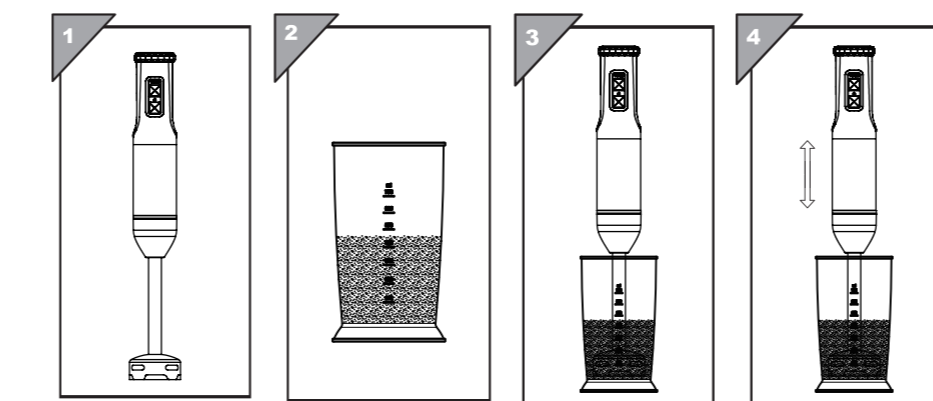
## HOW TO USE THE HAND BLENDER

The KB ELEMENTS Hand Blender is ideal for preparing dips, sauces, mayonnaise, baby food, smoothies, and milkshakes.  
Maximum working capacity: 700ml  
Important: Do not operate continuously for more than 1 minute at a time. Allow at least 2 minutes of rest between consecutive cycles.

## OPERATING INSTRUCTIONS

Insert the blender rod into the motor unit and push until it locks securely with a click. To detach, press the release buttons on both sides and pull the rod out.  
Add ingredients into the blender cup or another suitable container.  
For best results, use a ratio of 2 parts soaked food to 3 parts water by weight.  
Ensure the blade guard is fully submerged in the mixture to prevent splashing.  
Plug in the appliance. Press the Power button to start.  
Press the Low-Speed button and rotate the speed control knob to adjust from low to high, depending on your desired texture and consistency.  
Release the button to stop blending.  
Move the blender slowly up, down, and in circular motions through the mixture to ensure smooth blending.

**NOTE:** Never aim the blender rod or rotating blades at yourself, others, or toward any object. Always operate the hand blender with care, keeping fingers, clothing, and utensils away from the blade area during use.



## CLEANING AND MAINTENANCE

Always unplug the appliance before cleaning. Detach the blender rod or other accessories from the motor unit.

**\*Note: Do not immerse the detachable blender rod in water for extended periods, as this may wash away bearing lubrication.**

Rinse the rod under running water. Avoid using abrasive cleaners or harsh detergents. After washing, place it upright to allow any internal moisture to drain. The blender rod is dishwasher-safe. Wash the blender cup, bowl, beaters, and blades with warm soapy water.

**\*Caution: The bowl and beaters are not dishwasher-safe as plastic parts may deteriorate with prolonged dishwasher exposure.**

Use a damp cloth to wipe the motor unit.

**\*Caution: Never immerse the motor unit in water, as this may cause electric shock.**

Ensure all parts are completely dry. Store accessories on the included storage rack. Reattach the blender shaft to the motor unit and place it upright on a wall bracket or hang it for space-saving storage

To know more about this product, please visit our youtube channel



www.kbelements.de